

Location & Directions

If traveling north to south, take Alabama Highway 17 south from Interstate I-20/59 for 50 miles to Gilberttown, Alabama.

If coming from Meridian, Mississippi, take Highway 10 east for 35 miles to Butler, Alabama and turn south on Highway 17 to Gilberttown, Alabama.

In Gilberttown at the oil derrick, turn right (Melvin Road) and proceed three miles west. The lodge is on the right.

Transportation to and from airports in Birmingham, Mobile, Montgomery, Choctaw County, Alabama, and Meridian, Mississippi, is available for an additional fee



A successful Hog Hunt



Water Valley Lodge
2742 Melvin Road
Gilberttown
Alabama 36908

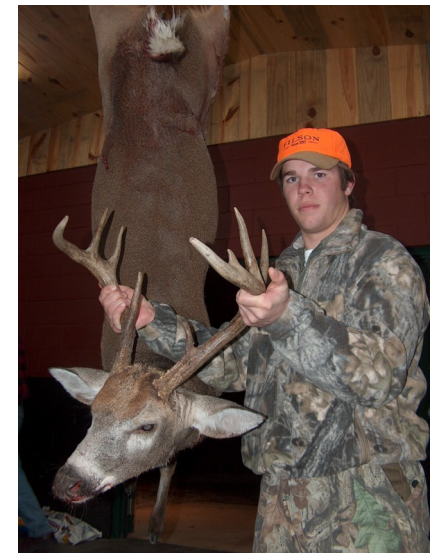
Phone: 251-843-3168

Fax: 251-843-6319

E-mail: info@watervalleylodge.com



The Ideal Location for Your Next Hunting Experience



Water Valley Lodge

Tel: 215 843-3168 Fax: 215 843-6319

www.watervalleylodge.com

The Ideal Location For Your Next Hunting Experience

Accommodations



Our 17,000 square foot lodge facilities offers guest rooms with private baths, dining hall with a fireplace and satellite television, a large recreation room with a fireplace offering billiards, big screen tv, and more, porches with rocking chairs, sauna, hot tub and pro shop.

Some great hunting memories are made here at Water Valley Lodge

Year-round the lodge is available for corporate retreats, meetings,

professional seminars, wedding receptions or other events. Consider Water Valley Lodge for your business meetings. Handicap accessible rooms and baths are available. Non-hunters are welcome.

Bookings

All hunts include food, transportation, lodging, cleaning and packing of game on ice. Bookings are made on a first come, first serve basis. A 50% deposit is required to confirm the reservation. The balance is due upon arrival. Credit cards, checks, or money orders are accepted for deposits, Credit cards, cash or money orders are accepted at the lodge. Deposits are not refundable.

If you would like to visit Water Valley and take a look around, please give us a call or visit our website at www.watervalleylodge.com

A Prime Location

With location in the Southwestern Alabama's legendary black belt deer habitat, Water Valley Lodge is the ideal location for your next hunting experience. Its lush, fertile land is renowned for growing large whitetail and plentiful turkey.

Featuring some of the finest hunting populations in the World, Water Valley Lodge is the perfect venue for entertaining clients or a weekend getaway among friends. Be our guest at Water Valley Lodge where nothing beats our southern hospitality and great hunting facilities.

What To Bring

Hunter orange is required to and from the stand. A solid orange hat is the minimum. All hunters must have an Alabama hunting license. License fees are not included. Be sure to watch the weather channel before you come and be prepared for warm and cold weather. Alabama can offer these two extremes in the same day. You should also be prepared for wet weather. Other than proper clothing you should bring a flashlight, an alarm clock, rubber boots, binoculars, face mask, bug spray (in early bow and turkey season) and ice chests. If you want to use a tree climber, you should bring your own as Water Valley does not provide climbers.

The Hunt

Our hunting takes place in pine plantations, hardwood stands, clear-cuts, or mixed terrain from gun houses located over choice food plots or from stands located on scrapes, rubs, and game trails.



Water Valley Lodge Office and Lodge House

Hunts are in tripods, ladder stands, lock-ons, box stands on the ground and in the air. Some people may hunt from the ground (clear cuts).

Morning hunts are from 5.15 to 10.30am, and afternoon hunts are from 2.30pm until dark. For those who prefer to stay out all day, we offer packed lunches and snacks.

Deer and turkey hunts are available on a first come first served basis. Hog hunting is available year round. You may hunt hogs with dogs for an extra fee.

Your deer will be dressed and hung in our walk-in cooler. We will quarter your deer and pack it on ice. You will need to bring ice chests for packing.

Game Management

Water Valley's wildlife management program produces an impressive harvest of white-tail deer, quail and turkey on approximately 30,000+ privately owned acres.

One reason for a healthy harvest at Water Valley is the round farming for game. Iron clay peas, chufa, soybeans, corn, wheat, clover, rye and oats are some of the year round cover crops available.

Limitations in the deer harvest is also important. Hunting over 30,000 gives Water Valley the opportunity to offer trophy hunting as well as hunting for the beginner.



Water Valley Lodge
2742 Melvin Road
Gilbertown
Alabama 36908

Phone: 251-843-3168
Fax: 251-843-6319

E-mail: info@watervalleylodge.com